

DEEPWATER INVICTUS

ULTRA-DEEPWATER DUAL-ACTIVITY DRILLSHIP



For additional information please contact:

Transocean
Marketing Department
1414 Enclave Parkway
Houston, TX 77077, USA
Phone: + 1-713-232-7500
Fax: + 1-713-232-7880
marketing@deepwater.com
www.deepwater.com

General Description

Design / Generation	DSME 12000 Ultra Deepwater Drillship
Constructing Shipyard	DSME (South Korea)
Year Entered Service / Significant Upgrades	2014
Classification	DNV X1A1
Flag	Marshall Islands
Dimensions	781 ft (238 m) long x 138 ft (42 m) wide x 62 ft (19 m) depth
Drafts	39 ft (12 m) operating / 29 ft (9 m) transit
Accommodation	200 persons
Displacement	114,640 st (104,000 mt) operating
Variable Deck	22,636 st (20,535 mt) operating / 22,636 st (20,535 mt) transit
Transit Speed	up to 12.5 knots
Maximum Water Depth	12,000 ft (3,658 m) designed / 10,000 ft (3,048 m) outfitted
Maximum Drilling Depth	40,000 ft (12,192 m)

Power & Machinery

Main Power	6 x HHI HIMSEN H32/40V V-type diesel engines rated 7,000 kW, 720 rpm, each driving 1 x 8,125 kVA AC generator
Emergency Power	One Caterpillar 3516B V-type diesel engine rated 1,780 kW, 1,800 rpm driving 1 x AC generator
Power Distribution	3 x Siemens NXPlus C Plus, 11 kV Switchboards with AKA Advanced Generator Protection

Storage Capacities

Fuel Oil	51,280 bbl (8,153 m3)
Liquid Mud	9,745 bbl (1,549 m3) active / 10,562 bbl (1,679 m3) reserve
Base Oil	5,031 bbl (800 m3)
Brine	5,031 bbl (800 m3)
Drill Water	18,869 bbl (3,000 m3)
Potable Water	9,359 bbl (1,488 m3)
Bulk Material	(mud + cement) 28,251 cu.ft. (800 m3)
Sack Storage	10,000 sacks

Drilling Equipment

Derrick	Dual Aker MH Pyramid Dynamic Derrick 213 ft (65 m) x 69 ft. (21 m) x 52 ft (16 m)
Hookload Capacity	(Main) 1,400 st (1,270 mt) capacity (Aux) 1,100 st (997 mt) capacity
Drawworks	(Main) AKMH Wirth GH 9000 EG-AC-1G, 4 x AC motors; 9,000 hp, 1,712 st (1,553 mt) with 16 x 2-1/4" lines strung lines (Aux) AKMH Wirth GH 6000 EG-AC-1G, three AC motors; 6,000 hp, 1,256 st (1,140 mt) with 14 x 2" lines strung
Compensator	(Main) Aker MH Crown Mounted Compensator with Active heave compensation, 750 st (680 mt) with 25 ft (7.6 m) max stroke. (Aux) Aker MH Crown Mounted Compensator with Active Heave, 500 st (454 mt) with 25 ft (7.6 m) max stroke.
Rotary Table	(Main) AKMH Wirth RTSS 75-1/2" hyd. 1250 st (1,134 mt) (Aux) AKMH Wirth RTSS 60-1/2" hyd. 1,000 st (908 mt).
Top Drive	(Main & Aux) 2 x Aker MH MDDM-1250-AC-2M 1,250 st (1,134 mt) tripping load, 945 st (857 mt) drilling load, 101,000 ft.-lbs. max continuous torque at 113 RPM, 0 - 280 max RPM, 2 x 1,050 hp ABB AC motors.
Tubular Handling	2 x Aker MH Hydraulic Iron Roughneck MH 1899, multi frame, tubular range 3-1/2" to 9-3/4". Aker MH racking systems tubular range 3-1/2" to 14". 2 x Vertical Pipe Racking Systems including 15 st (14 mt) bridge cranes with lower guiding arms. 1 x Horizontal Tubular Feeding Machine to handle single joints drill pipe and casing or casing stands up to 90 ft (27.4 m).
Riser Feed	1 x Horizontal Riser Feeding Machine for 21" x 75 ft (23 m) Riser Joints.
Mud Pumps	4 x AMH/Wirth TPK-7-1/2 x 14, 2,200 hp 7,500 psi
HP Mud System	Rated for 7,500 psi.
Solids Control	8-x Derrick Dual Pool (DP626); High G shale shakers

BOP & Subsea Equipment

BOP Rams	(Primary) Cameron 18-3/4", 15,000 psi 7-ram preventer; (2 x TL Doubles + 1 x TL Triple).
BOP Annulars	(Primary) 1 x Cameron Dual DL 18-3/4" (2 x elements), 10,000 psi annular preventer
2nd BOP Stack	(Secondary) Cameron 18-3/4", 15,000 psi 7-ram preventer; (2 x TL Doubles + 1 x TL Triple) with 1 x Dual annular
BOP Handling	BOP crane 2 x 275 st (249 mt) main hoists and 2 x 16.5 st (15 mt) service hoists; with BOP Trolley rated 595 st. (540 mt) 2 x 551 st (500 mt) BOP storage stands with sea-fastening.
Marine Riser	Cameron Load King 21" , 1,750 st (1,587.5 mt) (H Class), 75 ft (23 m) long per joint
Tensioners	8 x Aker MH Dual wireline riser tensioners, 125 st (113 mt) each. Total capacity 2,000 st (1,814 mt) with 12.5 ft (4 m) stroke 50 ft (15 m) max stroke.
Diverter	21-1/4" 500 PSI Type CSO diverter with 16" flow line
Tree Handling	1 x 165 st(150 mt) Xmas tree trolley with 1 x 165 st (150 mt) Xmas tree skid carts. Xmas trees can also be lifted or handled with the 182 st. (165 mT) Active Heave Compensating Subsea Crane.
Moonpool	82 ft. (25 m) x 33.5 ft. (10 m)

Station Keeping / Propulsion System

Thrusters	6 x (three at forward, three at aft) Rolls Royce 5,500 kW variable speed, fixed pitch, fully azimuthing, underwater demountable thrusters.
DP System	Kongsberg DPS-3 rated for water depths up to 12,000 ft. (3,658 m)

Cranes

Cranes	3 x 110 st (100 mt) NOV knuckle-boom cranes model OC4000KCE with semi-automated riser and tubular handling attachments.
AHC Subsea Crane	1 x 182 st (165 mT) NOV Active Heave Compensation knuckle-boom crane for handling subsea equipment up to 12,000 ft (3,658 m) WD.

Other Information

Helideck	Rated for Sikorsky S-61 & S-92 helicopters
Additional Features	MPD Ready

Revision Date: 11 July 2024

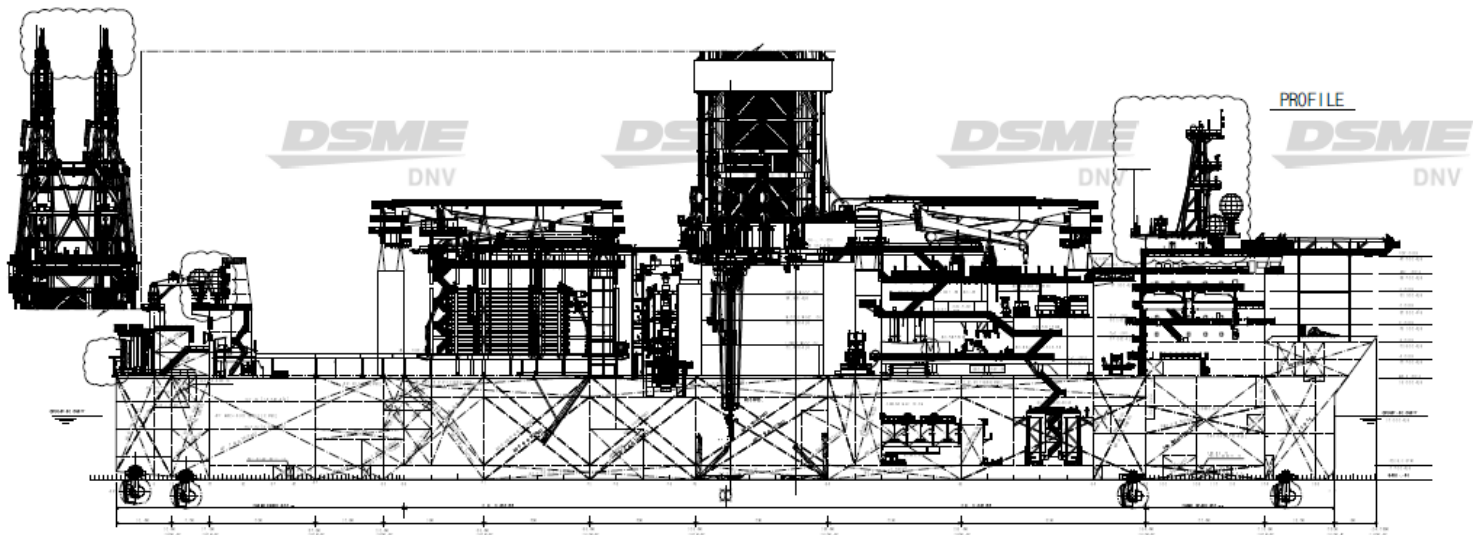
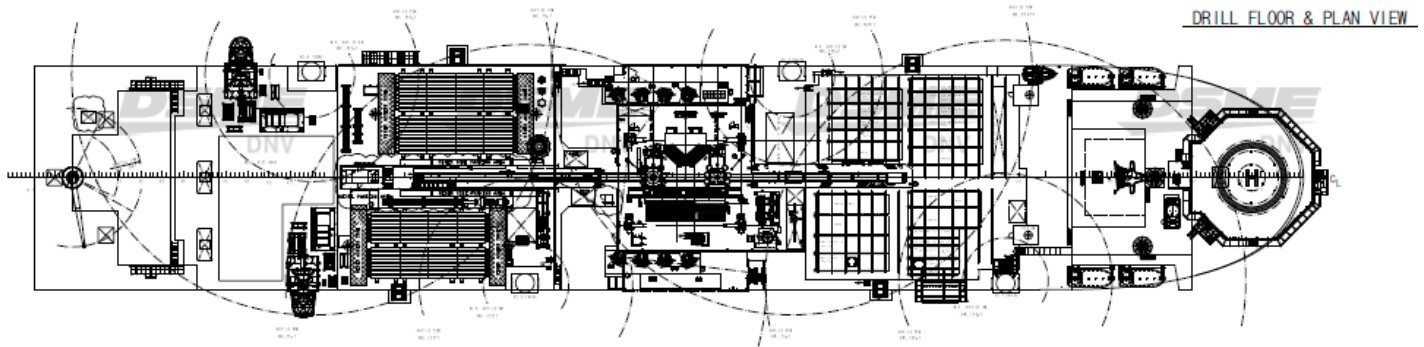


These specifications are intended for general reference purposes only, as actual equipment and specifications may vary based upon subsequent changes, the contract situation and customer needs. All equipment shall be operated and maintained at all times, in compliance with Transocean standard operating manuals, policies and procedures, and within its stated operational limits or continuous rated capacity, in order to assure maximum operational efficiency.

Patent Notice: This rig, its systems, components, and/or equipment in use on this rig, may be protected by one or more US and/or foreign patents.

DEEPWATER INVICTUS

ULTRA-DEEPWATER DUAL-ACTIVITY DRILLSHIP



BOUNDLESS

SERVICE FOCUSED
DATA DRIVEN
PERFORMANCE ORIENTED

Revision Date: 30 May2024



These specifications are intended for general reference purposes only, as actual equipment and specifications may vary based upon subsequent changes, the contract situation and customer needs. All equipment shall be operated and maintained at all times, in compliance with Transocean standard operating manuals, policies and procedures, and within its stated operational limits or continuous rated capacity, in order to assure maximum operational efficiency.

Patent Notice: This rig, its systems, components, and/or equipment in use on this rig, may be protected by one or more US and/or foreign patents.